

ITA Tool System – compatible with Omni-tuff PET Strapping

There are two options available for this system!

Option 1 is the ITA21 Tool (Code 03-ITA21)

Description: OMNI-TUFF ITA 21 Battery Operated Strapping Tool Kit 16mm-19mm (PET)
(Incl. 2 Batteries + Charger)

Technical Specifications:

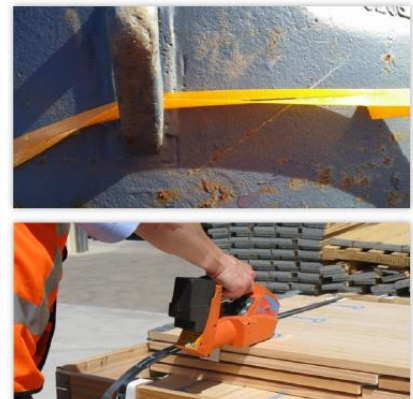
- ✓ Light Weight
- ✓ Lithium Polymer Battery - no memory effect, therefore very efficient recharge

<u>Length</u>	315mm
<u>Width</u>	140mm
<u>Height</u>	183mm
<u>Weight</u>	3.8kgs
<u>Battery</u>	14.8V - 3 A/h LI-PO

Performance:

<u>Max. Tension Force</u>	4000N
<u>Tensioning Speed</u>	9mt/m
<u>Sealing</u>	Friction Weld Seal
<u>Joint Strength</u>	80% of Plastic Strap Strength*

* depends on strap type



Option 2 is the next model up: ITA25 (Code 03-ITA25)

Description: OMNI-TUFF ITA 25 Battery Operated Strapping Tool Kit 16mm-19mm (PET)
(Incl. 2 Batteries + Charger)

Technical Specifications:

- ✓ Light Weight
- ✓ Lithium Polymer Battery - no memory effect, therefore very efficient recharge
- ✓ Three settings - Automatic, Semi-Automatic and Manual
- ✓ *One Push Operated (Automatic Setting)*

<u>Length</u>	300mm
<u>Width</u>	150mm
<u>Height</u>	160mm
<u>Weight</u>	4.1kgs
<u>Battery</u>	14.8V - 3.2 A/h LI-PO

Performance:

<u>Max. Tension Force</u>	5500N
<u>Tensioning Speed</u>	12mt/m
<u>Sealing</u>	Vibration Sealing
<u>Joint Strength</u>	80% of Plastic Strap Strength*

* depends on strap type



What is the difference between the two ITA Tools?

The ITA25 is fully automatic with a push button pad, while the ITA21 is semi-automatic requiring a manual handling step using a lever.

The ITA25 also has a stronger tension force, at 5500N, compared to the ITA21 at 4000N. Another difference is that the ITA25 has a faster tensioning speed, at 12 metres per minute, while the ITA21's speed is 9 metres per minute.