



DESIGN > LOGISTICS
WWW.DAYWALK.COM

Making *Component Transport Easy* for the world.

- > Safe and compliant logistics engineering
- > Quality storage solutions
- > Effective asset preservation





UNDERSTANDING YOUR NEEDS

- ✓ Your role.
- ✓ Your equipment.
- ✓ Your process.

“Daywalk is one of those suppliers that do a lot of innovation for us. From our point of view, we really enjoy the partnership.”

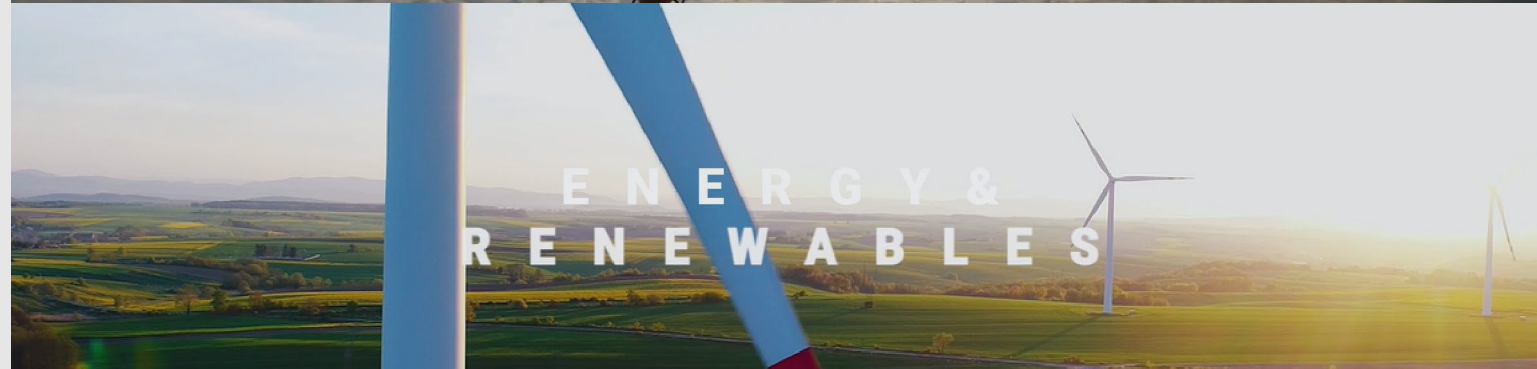
- Procurement Manager at Hastings Deering





INDUSTRIES WE SUPPORT

- ✓ Mining
- ✓ Oil & Gas
- ✓ Defence
- ✓ Energy & Renewables
- ✓ OEMs & Manufacturing
- ✓ Logistics



DAYWALK 

WE ARE TRUSTED BY

LIEBHERR

 **Alcoa**

KOMATSU

BHP



RioTinto



FLENDER



WEIR

WesTrac



TOSHIBA

 **Santasalo**



 **MACMAHON**

ABB



Hastings Deering



BA BREAKERS & ATTACHMENTS



FLS


FLANDERS

GLENCORE

HITACHI



We are the **leaders** in delivering **end-to-end compliant** systems for **component storage and transport**.



BeAssured

You get tailored designs that work s

> We design and build transport frames, and that's all we do.

You have tested assurance the design won't fail

> We've got the best design/engineering team in the industry.

You won't need to buy replacements

> Our solutions are tough, and they work.

You have a full paper trail if an incident occurs

> We back you up with end-to-end support.



WE DESIGN & BUILD TRANSPORT FRAMES, AND THAT'S ALL WE DO.

You get tailored designs that work.

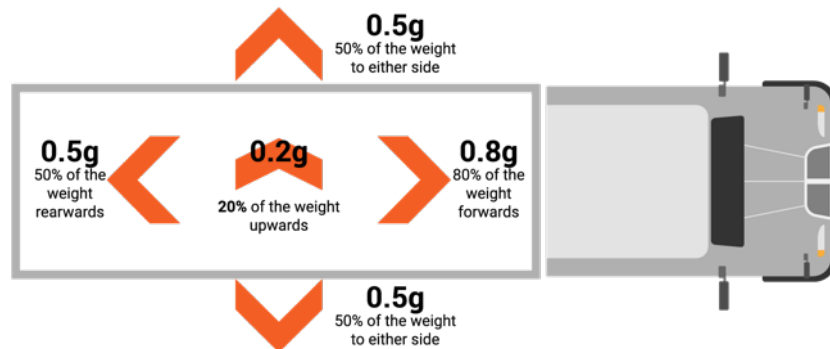
- ✓ One solution can fit multiple component challenges
- ✓ Your component becomes FIT FOR TRANSPORT
- ✓ Trusted by mega miners and big players in the oil and gas sector
- ✓ HVNL (Heavy Vehicle National Law) and Schedule 7 Compliant



WE'VE GOT THE BEST DESIGN/ENGINEERING TEAM IN THE INDUSTRY.

You have tested assurance that the design won't fail.

The Performance Standards in the Load Restraint Guide



ENGINEERING CERTIFICATION

- ✓ Daywalk collaborates with mega miners on their specifications to ensure best practice.

 Specification Transport Frames and Workboxes Specification Engineering	BHP BHP Iron A.S.N. 40.00 City Square 125 St James PERTH WA	BHP ENGINEER Maintenance and Engineering Centre of Excellence Business Level Document
	STANDARD ENGINEERING PRACTICE NUMBER: SEP-60/15 DESCRIPTION: WAIQ STANDARDS DOCUMENT MANAGEMENT INTERNAL REGISTRATION OF CRITICAL PLANT COMPANY REQUIREMENTS OFFICE OF ORIGIN: BHPIC WRITTEN BY: Michael Anderson CHECKED BY: Lloyd Muir TITLE OF CHECKER: Asset GTS - AIMS Project Lead	PAGE: CONTRACT: Document number: MECOE.BLD.0012 Documentum ID: 012809353 Version: 1.1 July 2021
STATUS REVIEW BY BHPIC RESPONSIBLE MANAGER/ENGINEER REVIEWED (Alpha or Numeric): REVIEWED AS NOTED:		

DAYWALK solutions can help you comply to:



Australian Standards



HVNL
Heavy Vehicle National Law



Wind Loading



Materials Handling

OUR SOLUTIONS ARE TOUGH, AND THEY WORK.

You won't need to buy replacements.

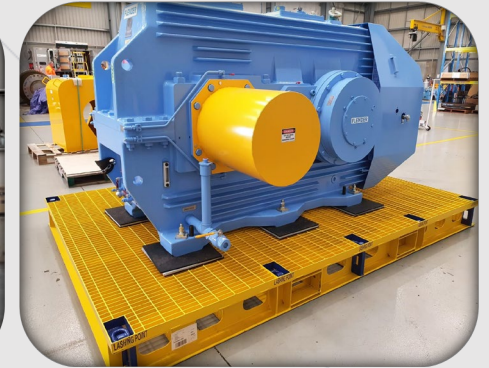
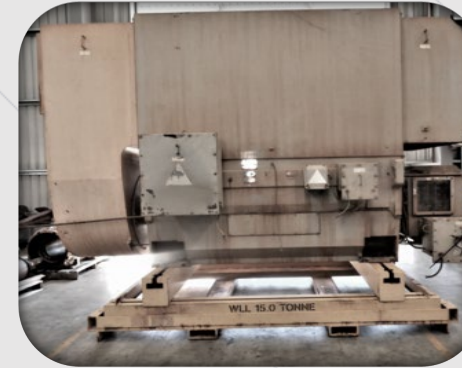
Be Assured

We stand the test of time.

Outlasting Australia's harsh weather and environments.

Fortified by means of a hot-dip galvanising process.

Other "Solutions" Vs. Daywalk Innovations



WE BACK YOU UP WITH END-TO-END SUPPORT

You have a full paper trail if an incident occurs.





TRANSPORT



SAFE AND COMPLIANT TRANSPORT ENGINEERING

Your Challenges

One-time ratings, unsustainable, price increases.

Time constraints and cost inefficiencies.

Sourcing a frame for adaptability & reassurance.

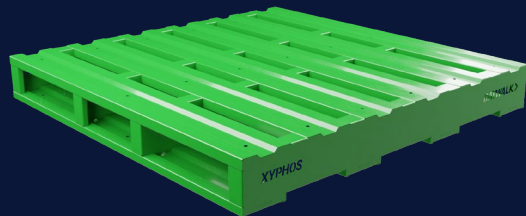
XYPHOS PALLET RANGE

Australian Patent 2024202304 & 202312375

A pre-certified & cost-effective solution to timber pallets

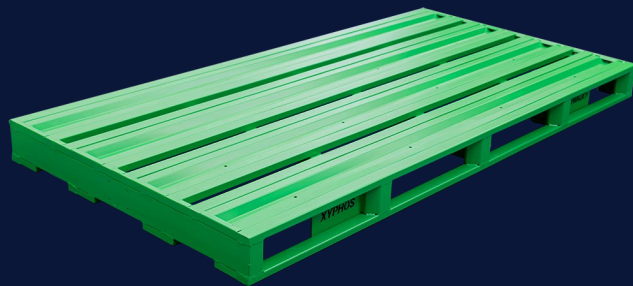
All Xyphos are rated to 4T WLL *Uniformly Distributed Load, Static Storage only.

SINGLE



13-PX1160/GR
1160mmL x 1160mmW

DOUBLE



13-PX2300/1160/GR
2300mmL x 1160mmW

PLUS

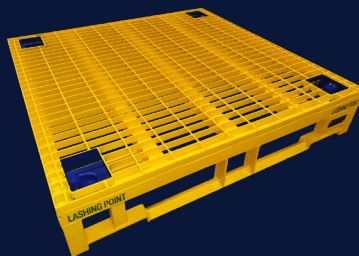


13-PX1160/PLUS
1160mmL x 1160mmW

SPARTAN PALLET RANGE

Engineered for safe handling of heavy equipment on-site, in workshops, & warehouses

1T



13-PSEG1160
1160mmL x 1160mmW

2T



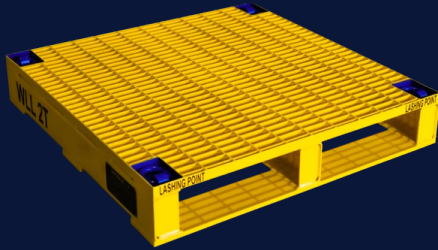
13-PSEG2320
2320mmL x 1160mmW

ADAPTA HEAVY DUTY STEEL PALLET RANGE

A robust & versatile solution for the transport and storage of heavy components.

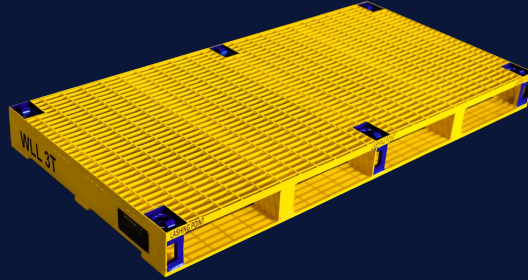


2T



13-PSGG1160
1160mmL x 1160mmW

3T



13-PSGG2320
2320mmL x 1160mmW

3.5T



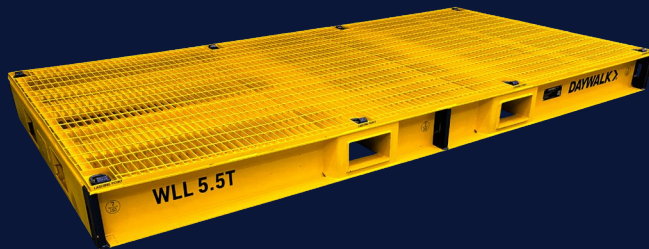
13-PMGG2320/1500
2320mmL x 1500mmW

5T



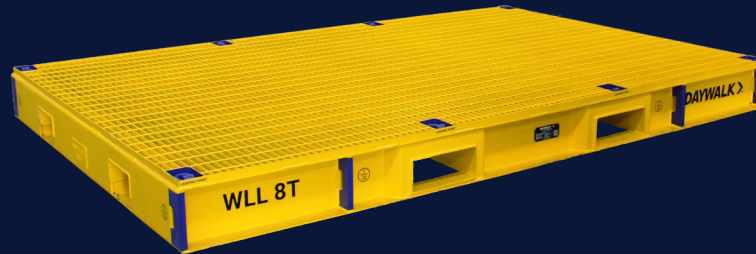
13-PMGG2320/2320
2320mmL x 2320mmW

5.5T



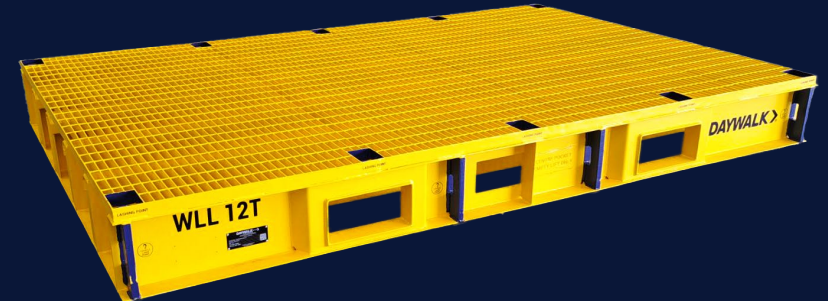
13-PMGG3500/1800
3500mmL x 1800mmW

8T



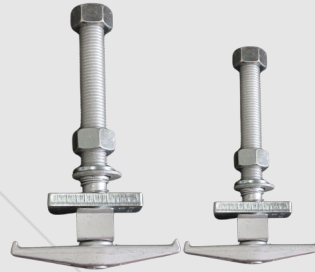
13-PMGG3500/2320
3500mmL x 2320mmW

12T



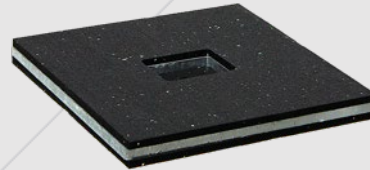
13-PSGG3500/2320/12T
3500mmL x 2320mmW

ADAPTA HEAVY DUTY STEEL PALLET ACCESSORIES



Hold-down bolts

- ✓ Innovative and patented
- ✓ World-leading top-down system
- ✓ Forged galvanised coating, not welded
- ✓ Compliant to transport forces



Spreader plate

- ✓ Distribute load weight safely
- ✓ Engineered for transport
- ✓ Prevents crushing during emergency braking

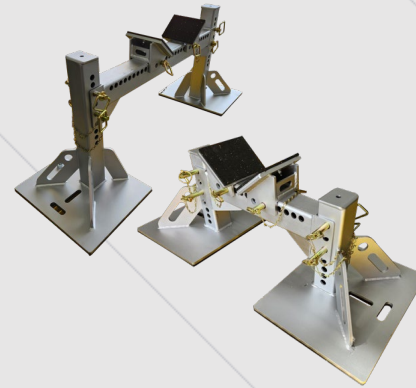


Friction-rated rubber

- ✓ x3 friction rating of conventional rubber
- ✓ Multiple pre-cut sizes available
- ✓ Stocked nationally

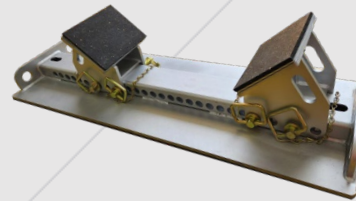
ADAPTA HEAVY DUTY STEEL PALLET ACCESSORIES

[LEARN MORE](#)



Adjustable Stands

- ✓ Hot-dip galvanised
- ✓ Includes load resistant rubber and bolts
- ✓ Logistics Engineered and Rated for Transport
- ✓ Lashing points for direct restraint



Adjustable Chocks

- ✓ Lashing points for direct restraint
- ✓ Includes handles for easy manual handling
- ✓ Adjustable and configurable for wide range of applications



Steel Pallet Hoods

- ✓ Suitable for 2T Adapta Steel Pallet (1160x1160)
- ✓ Bright red lift points for secured crane lifting
- ✓ Up to 300kg rated lashing restraint
- ✓ Heavy duty powder coated

MOBILE PLANT COMPONENT SOLUTIONS

- ✓ MODULAR CYLINDER FRAME RANGE
- ✓ FINAL DRIVE RANGE
- ✓ RODS AND BARRELS RANGE
- ✓ CRANKSHAFT BOXES
- ✓ CAB FRAMES
- ✓ ALTERNATOR FRAMES



MODULAR CYLINDER SOLUTIONS



Australian Patent No. 2021102166 & 2022209297

- ✓ Suits hundreds of variants of cylinder components.
- ✓ Includes lash points, bunding, and end-stoppers.



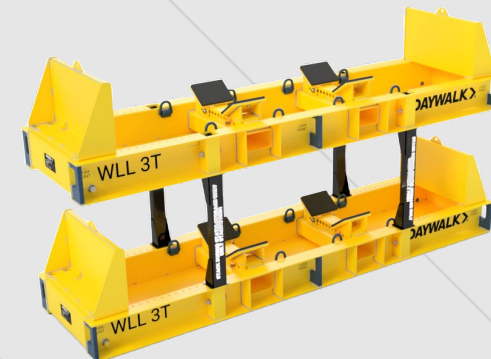
400kg WLL, to suit cylinders 1200mmL



800kg WLL, to suit cylinders 2100mmL



2500kg WLL, to suit
cylinders 3000mmL



3000kg WLL, to suit
cylinders 2600mmL



3000kg WLL, to suit
cylinders 789D, 785C, 793F
FLAT BASED



6000kg WLL, to suit
cylinders 5540mmL

FINAL DRIVE SOLUTIONS



- ✓ Designed for adjustability, functionality, and safety
- ✓ Fits multiple sizes of CAT Final Drives
- ✓ Engineered and Certified for Transport and Storage



LEARN MORE

8.5T Final Drive Frame Kit Extended
New and Improved with End Stoppers



8.5T Final Drive Frame Kit Extended
Custom branding & colours available



Suited to D11 Final Drive Component



Suited to 785 Final Drive Component



Suited to 789 Final Drive Component



Suited to 793 + 793 EXT Final Drive Component



FIXED PLANT COMPONENT SOLUTIONS

- ✓ ISO PORTA
- ✓ ADJUSTABLE PUMP FRAME
- ✓ PULLEY FRAME
- ✓ WIDE ROUND
- ✓ TRANSPORTA
- ✓ FREIGHT-RAK



ISO-PORTA[®] SOLUTIONS

- ✓ Market leader in vibration dampening
- ✓ 4-way Adjustability to support multiple components
- ✓ Stackability for safe storage efficiency



ADJUSTABLE PUMP SOLUTIONS

Australian Patent 2021104657

- ✓ Patented logistics certified frame designed for functionality and safety
- ✓ Nine-axis adjustability
- ✓ Restraint lugs for safe pump restraint



LEARN MORE



Bare-shaft Pumps



Vertical Sump Pumps



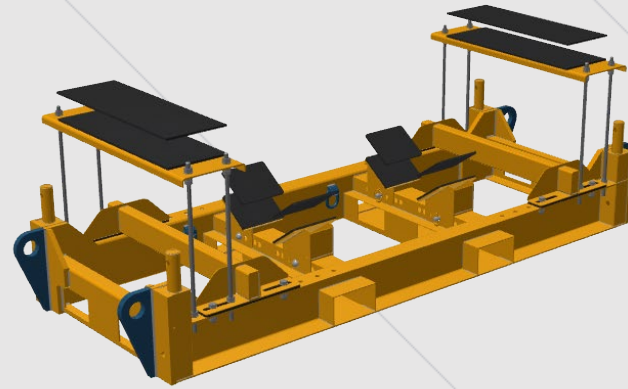
Clamshell Pumps



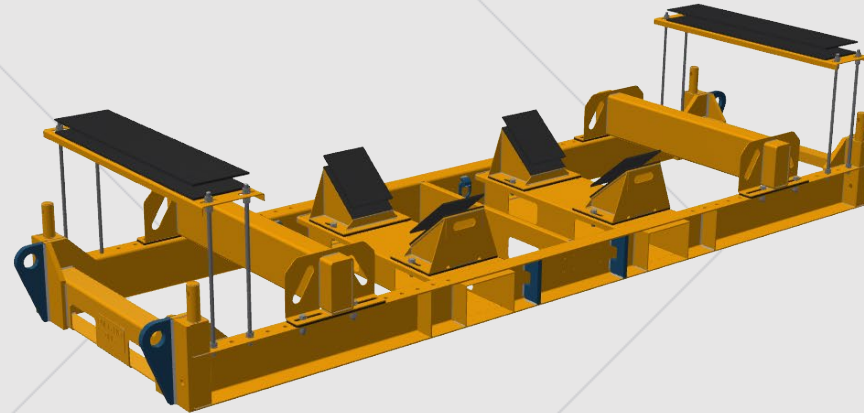
Pump Service Kits

PULLEY FRAME SOLUTIONS

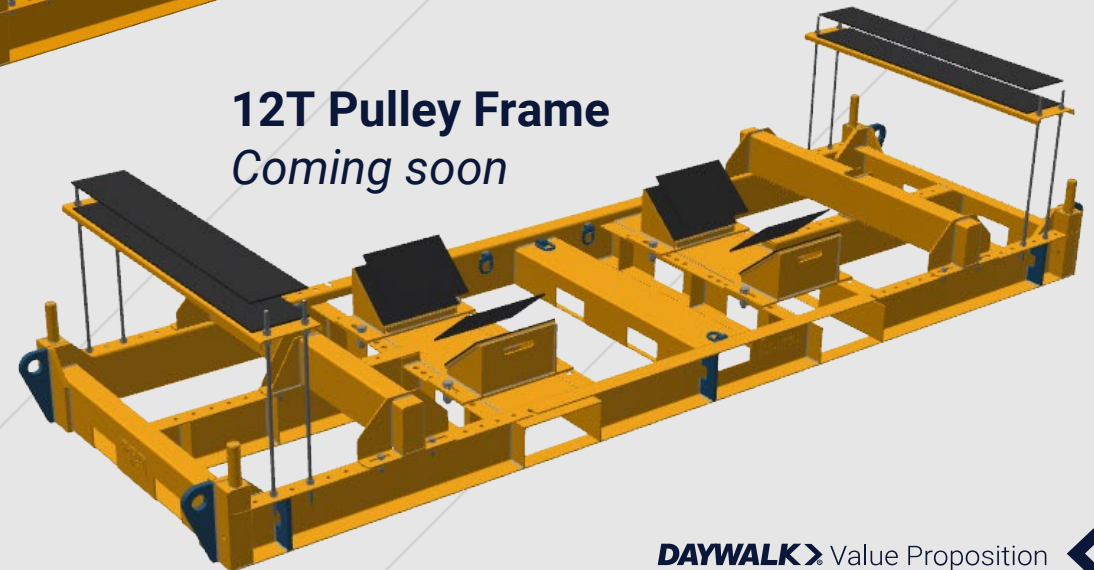
- ✓ Adjustable to suit different sizes of Pulleys
- ✓ With bearing support to prevent Brinelling
- ✓ End Stopper to reduce movement



2T Pulley Frame
Coming soon



6.5T Pulley Frame



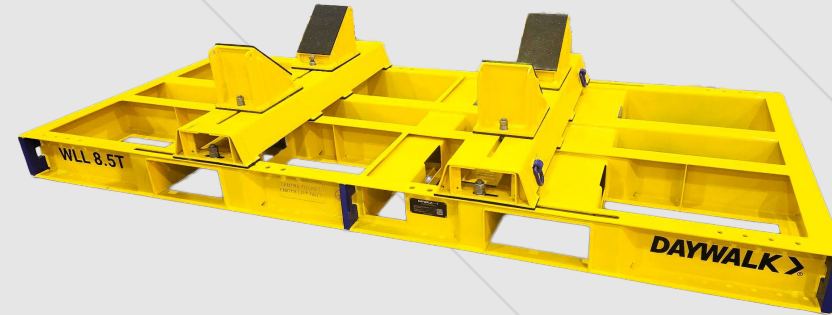
12T Pulley Frame
Coming soon

WIDE ROUNDS SOLUTIONS

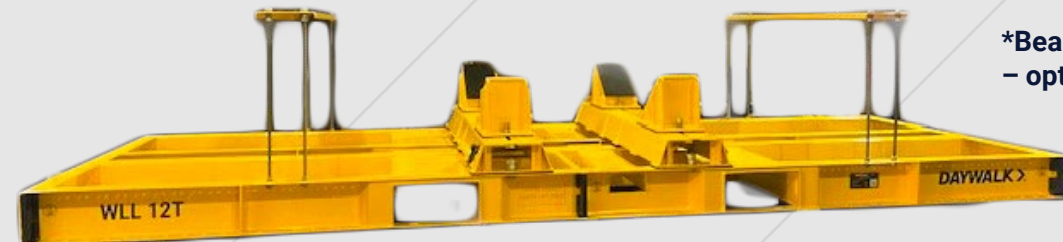
- ✓ Perfect for large round components, including drums, rollers, and pulleys etc.
- ✓ Includes x4 Inner Rubber Pads
- ✓ Anti-brinelling Bearing Support as an optional accessory



8.5T WIDE ROUND FRAME



12T WIDE ROUND FRAME



*Bearing support
– optional accessory

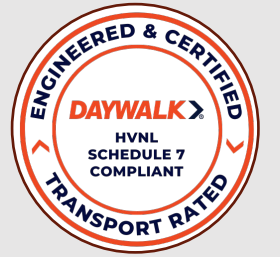
TRANSPORTA[®] SOLUTIONS

Australian Patent App 2022200310

- ✓ Integrated transport frame for high-value spares
- ✓ Complete protection and logistics certified
- ✓ Multiple sizes available up to 20T+



LEARN MORE



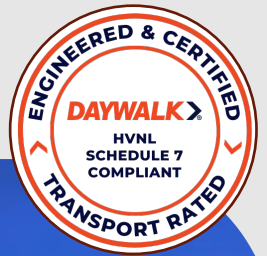
FREIGHT-RAK[™]

SOLUTIONS

- ✓ Adjustable transport frame for high-value spares
- ✓ Logistics certified and includes QR coded system
- ✓ Stackable empty
- ✓ Multiple sizes available up to 20T+



[LEARN MORE](#)



COMPONENT LIBRARY SOLUTIONS





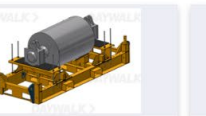



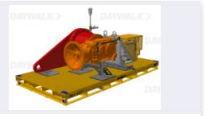















- ✓ Finds a solution to your needs
- ✓ A valuable source of information
- ✓ Daywalk does the hard yards for you

Can't find a Transport Frame Solution for your component?

We have a vast component library and can customise a solution for your needs.

Cards

Search: Type to filter | People | Filter

 <p>1 / 2</p> <p>Electric Drive Frame</p> <p>Category (gea... Drive Assembly)</p> <p>Brand of Com...</p> <p>Model of Com...</p> <p>Customer Na... Innomatics Pty L...</p> <p>Reference (if n... OPP53024 Innom...</p>	 <p>CO-00000-DR-ME-0333</p> <p>Category (gea... Pulley)</p> <p>Brand of Com... FMG BHP</p> <p>Model of Com...</p> <p>Customer Na... Orontide</p> <p>Reference (if n... OPP52519 Orontid...</p>	 <p>11388_TAIL ND PULLEY 864 x 2350_ASSY_REV 0</p> <p>Category (gea... Pulley)</p> <p>Brand of Com... FMG BHP</p> <p>Model of Com...</p> <p>Customer Na... Orontide</p> <p>Reference (if n... OPP52519 Orontid...</p>	 <p>09957_PULLEY 824 x 2000 ASSY_REV 0</p> <p>Category (gea... Pulley)</p> <p>Brand of Com... FMG BHP</p> <p>Model of Com...</p> <p>Customer Na... Orontide</p> <p>Reference (if n... OPP52519 Orontid...</p>	 <p>11394_TAIL ND PULLEY 632 x 900_ASSY_REV 0</p> <p>Category (gea... Pulley)</p> <p>Brand of Com... FMG BHP</p> <p>Model of Com...</p> <p>Customer Na... Orontide</p> <p>Reference (if n... OPP52519 Orontid...</p>	 <p>22T Transport Frame to suit Hydraulic Cylinder Unit</p> <p>Category (gea... Cylinder)</p> <p>Brand of Com...</p> <p>Model of Com...</p> <p>Customer Na...</p> <p>Reference (if n...)</p>
 <p>15T Transport Frame to suit Hydraulic Cylinder Unit</p> <p>Category (gea... Cylinder)</p> <p>Brand of Com...</p> <p>Model of Com...</p> <p>Customer Na...</p> <p>Reference (if n...)</p>	 <p>Squirrel Cage Motor on RSP</p> <p>Category (gea... Motor)</p> <p>Brand of Com...</p> <p>Model of Com...</p> <p>Customer Na...</p> <p>Reference (if n...)</p>	 <p>Gearbox Drive Assembly on RSP</p> <p>Category (gea... Drive Assembly)</p> <p>Brand of Com...</p> <p>Model of Com...</p> <p>Customer Na...</p> <p>Reference (if n...)</p>	 <p>1.2T Wuxi Omec Motor on RSP 3T</p> <p>Category (gea... Motor)</p> <p>Brand of Com...</p> <p>Model of Com...</p> <p>Customer Na...</p> <p>Reference (if n...)</p>	 <p>Transport Frame to suit 16T Drive Assembly</p> <p>Category (gea... Drive Assembly)</p> <p>Brand of Com...</p> <p>Model of Com...</p> <p>Customer Na...</p> <p>Reference (if n...)</p>	 <p>Actuator #3 (2x 1100kg) on RSP 2.0</p> <p>Category (gea... Actuator)</p> <p>Brand of Com...</p> <p>Model of Com...</p> <p>Customer Na...</p> <p>Reference (if n...)</p>
 <p>Actuator #5 (2x 2400kg) on RSP 2.0</p> <p>Category (gea... Actuator)</p> <p>Brand of Com... 2400kg</p> <p>Model of Com... ConocoPhillips</p> <p>Reference (if n... OPP51716 Conoco...</p>	 <p>Pinion Shaft Ball Mill 6.2T</p> <p>Category (gea... Mill Pinion)</p> <p>Brand of Com...</p> <p>Model of Com... 6.2T</p> <p>Customer Na... AngloGold</p> <p>Reference (if n... OPPXXXXX Anglo...</p>	 <p>DN400 Knife Gate Valve</p> <p>Category (gea... Valve)</p> <p>Brand of Com...</p> <p>Model of Com... MN6008788</p> <p>Customer Na... Fortescue</p> <p>Reference (if n... OPP51642 Fortesc...</p>	 <p>DN450 Knife Gate Valve</p> <p>Category (gea... Valve)</p> <p>Brand of Com...</p> <p>Model of Com... MN6008783</p> <p>Customer Na... Fortescue</p> <p>Reference (if n... OPP51642 Fortesc...</p>	 <p>Multi-tool Storage and Transport Solution - RSP and Legs</p> <p>Category (gea... Smalls)</p> <p>Brand of Com...</p> <p>Model of Com...</p> <p>Customer Na... TechnipFMC</p> <p>Reference (if n... OPP51811 Technip...</p>	 <p>8/4 RV-TC on Local APF Standard</p> <p>Category (gea... Pump)</p> <p>Brand of Com... Warman</p> <p>Model of Com... 8/4 RV-TC</p> <p>Customer Na... Weir Minerals</p> <p>Reference (if n...)</p>
 <p>1 / 2</p> <p>Pink 800kg Spartan Cylinder Pallet</p> <p>Category (gea... Cylinder)</p> <p>Brand of Com...</p> <p>Model of Com...</p> <p>Customer Na...</p> <p>Reference (if n...)</p>	 <p>HE Stand for 10.6 Magnet on 12T RSP</p> <p>Category (gea... Magnet)</p> <p>Brand of Com...</p> <p>Model of Com...</p> <p>Customer Na...</p> <p>Reference (if n...)</p>	 <p>Stacking APF (Frame only)</p> <p>Category (gea... Pump)</p> <p>Brand of Com...</p> <p>Model of Com...</p> <p>Customer Na...</p> <p>Reference (if n...)</p>	 <p>Transport Solution to suit 1.25T Kelair Pump - MN6008935</p> <p>Category (gea... Pump)</p> <p>Brand of Com...</p> <p>Model of Com...</p> <p>Customer Na...</p> <p>Reference (if n...)</p>	 <p>Heat Exchanger Stackable Steel Box</p> <p>Category (gea... Heat Exchanger)</p> <p>Brand of Com...</p> <p>Model of Com...</p> <p>Customer Na...</p> <p>Reference (if n...)</p>	 <p>Boom Arm Workshop Frame</p> <p>Category (gea... Bucket)</p> <p>Brand of Com...</p> <p>Model of Com...</p> <p>Customer Na...</p> <p>Reference (if n...)</p>

OUR PROCESS



OR





STORAGE



QUALITY STORAGE OPTIONS

Durable cages, stillages and pallets made for the toughest environments.

Your Challenges

Ideal warehouse space, storing components for seamless operations.

Addressing hazards and unsafe storage practices.

Alternatives that are readily available and practical.

STEEL CAGES AND STILLAGES

- ✓ Ideal for heavier components and storing multiple SKUs
- ✓ Designed for Australian pallet racking – with easy access
- ✓ Galvanised, stackable, and collapsible options available

LEARN MORE



OUR CAGES ARE TOUGH, AND THEY WORK.

You won't need to buy replacements.

- ✓ Galvanised, opposed to zinc or powder plated
- ✓ 4-way racking and forklift compatible
- ✓ Rated to 1.2T stacked 4 high
- ✓ Rugged construction
- ✓ Cambered & Recessed under-rails

“ We have now removed all pallet racking from our job storage area, and we have increased our available storage footprint by 100% while making the process both safer and easier for our employees. ”

- Repairs Superintendent at Metso

Other Solutions VS **Daywalk Innovations**

Zinc Plated

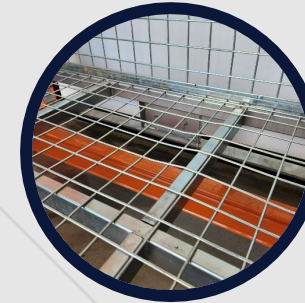


VS

Galvanised



Lite Gauge Base



VS

Heavy Duty Gauge Base



Flat Under-rail



VS

Cambered Under-rail



Lite Gauge



VS

Rugged



SPARTAN VISIONMOD PALLET CAGE RANGE



13-PMC300RD2PH



13-PMC500RD2PH

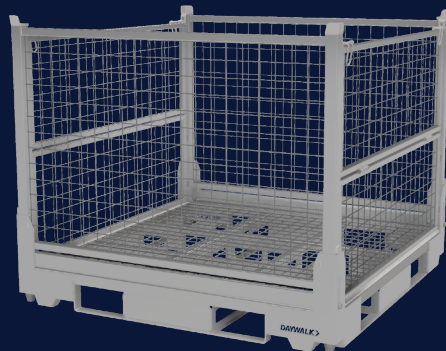


13-PMC800RD2PH

XYPHOS CAGES

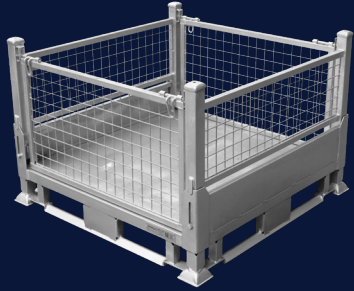


13-PSS400/1160/M/XC/HD



13-PSS800/1160/M/XC/HD

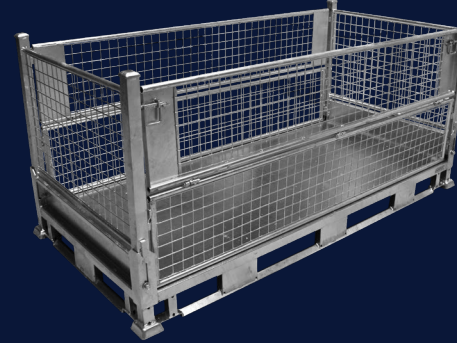
HEAVY DUTY GALVANISED CAGES



13-PSS500C/INT/HD

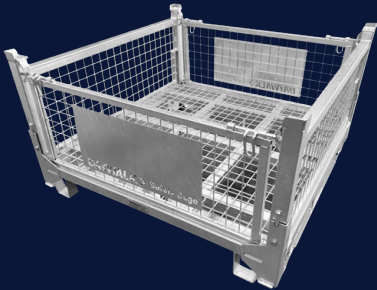


13-PSS800C/INT/HD



13-PSS800/2200/C/INT

SAFETY CAGES



13-PSS400/1160/SC



13-PSS800/1160/SC

REUSABLE COVERS - 650GSM PVC

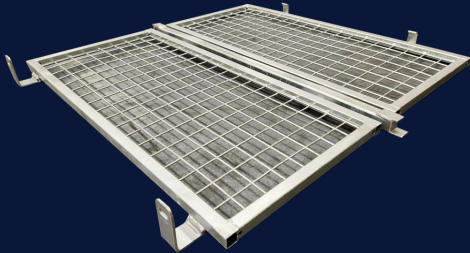


13-PCPI500P



13-PCPI800P

LOCKABLE LIDS



13-PSS/INT/L

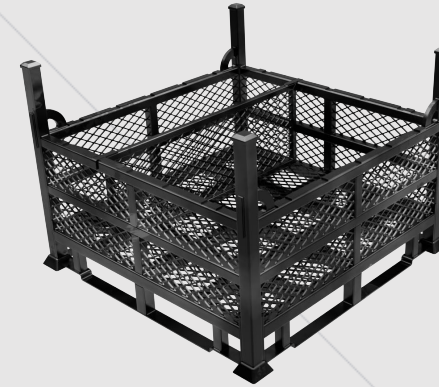


13-PSS/INT/L/BF

RHINO WORKSHOP BASKETS

- ✓ Optional divider system to mitigate hand injuries.
- ✓ Certified for storage, forklift use, and crane lift.
- ✓ Stackable 3 high and pallet racking compatible.
- ✓ Ideal for areas with limited floor space.

LEARN MORE



SKU 13-PSCC1160/1160/1T



Stackable -
3 baskets high



SHEETED CAGES AND STILLAGES

- ✓ Stackable and collapsible
- ✓ Hinged Gas Strut Lid option
- ✓ Custom branding and colours option

LEARN MORE



13-PSS1100SSDP



13-PSS800C/INT/S/OR



13-PSS1100SSDPP/BLUE



STRAPPING AND RESTRAINTS

- ✓ Recyclable PET for fast-paced, and high-volume operations
- ✓ Polywoven for round or oddly-shaped items
- ✓ Reusable camlock straps to save time and money in storage

**IN-HOUSE TOOL
SERVICING AVAILABLE**



LEARN MORE



03-ITA21/19KIT
PET Strapping Kit



03-CHD/NKIT
Polywoven Strapping Starter Kit



03-ST/GTX



03-ITA21



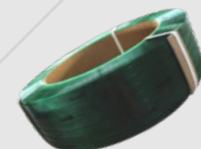
03-ITA25



06-SPET19100PEPK



06-SPET19100PEPK



06-SPET19089OE



PRESERVATION



EFFECTIVE ASSET PRESERVATION

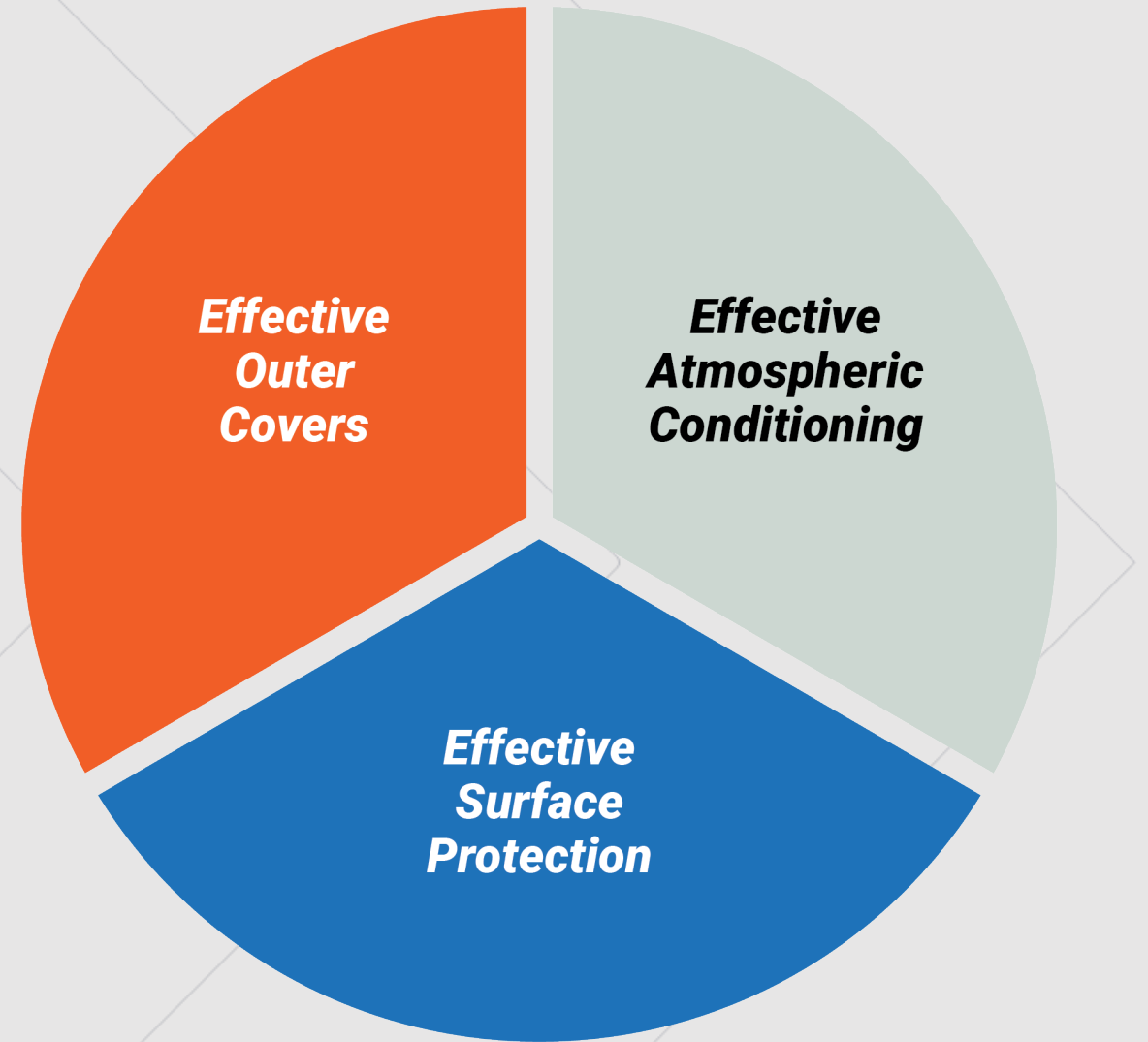
Your Challenges

Preventing moisture that leads to corrosion

Protection from weather, dust and contaminants

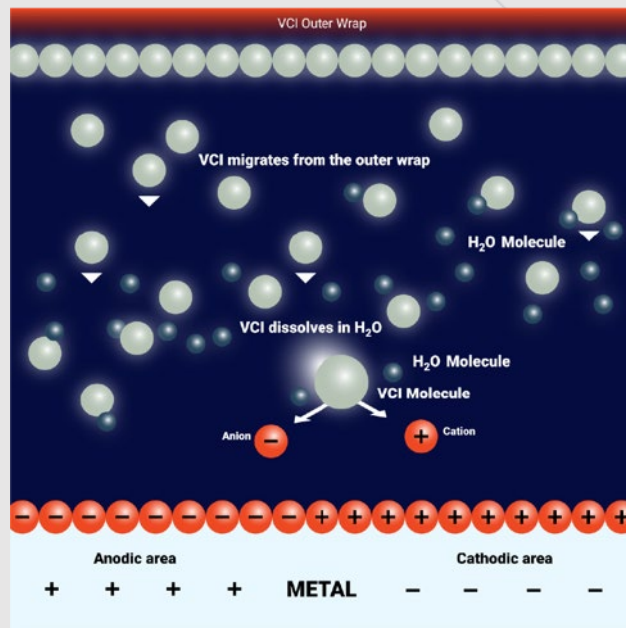
Reducing plastic wrapping cost and waste

OUR THREE-STEP PRESERVATION MODEL



WHAT IS eVCI®?

- ✓ Scientifically Proven
- ✓ Self-replenishing & re-healing
- ✓ A system that works



eVCI® IN ACTION



BARE METAL



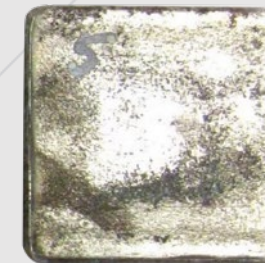
ZIP SEAL BAG



UV PLASTIC



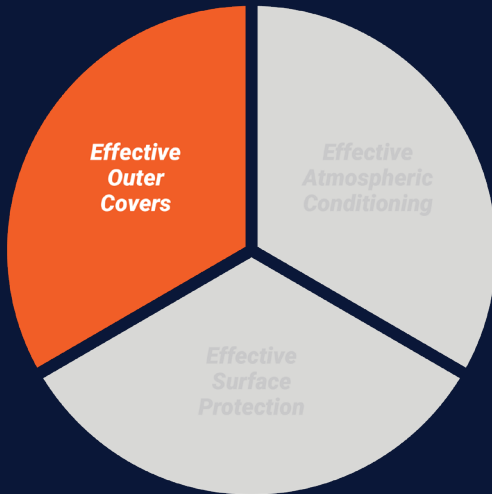
UV/VCI PLASTIC



UV/VCI
STRETCH FILM

COVERS

- ✓ Ideal for sealing against weather and dust
- ✓ UV-stabilised to ensure long-lasting protection
- ✓ Reusable covers available to reduce waste and costs
- ✓ Includes VCI for effective rust prevention



LEARN MORE



Reusable Covers

13-PCPI/MISC



eVCI® Sheet

12-LFSWUBC5425/30

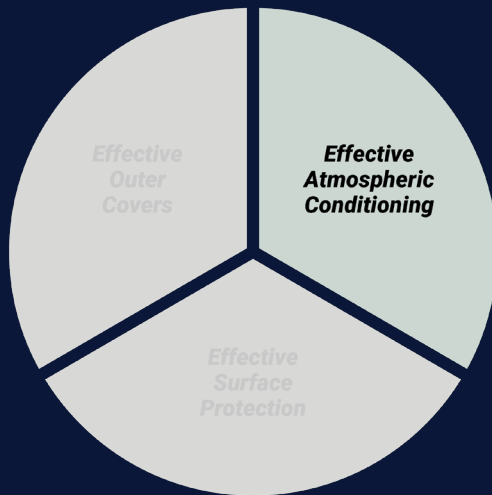


UV/eVCI® Bags

12-PBNUC200-2100

CONDITIONING

- ✓ Effective atmospheric control
- ✓ Neutralises moisture and forms a protective layer
- ✓ Scientifically proven – with zero corrosion claims to date



LEARN MORE



eVCI® Desiccant

09-eVCI® Desiccant

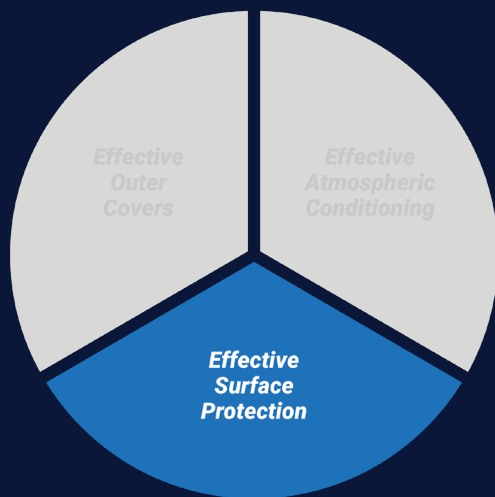


eVCI® Powder

09-eVCI® Powder

SURFACE PROTECTION

- ✓ Superior surface metal protection
- ✓ Flexible and affordable over the life of your asset
- ✓ Unique peelable coatings available



LEARN MORE



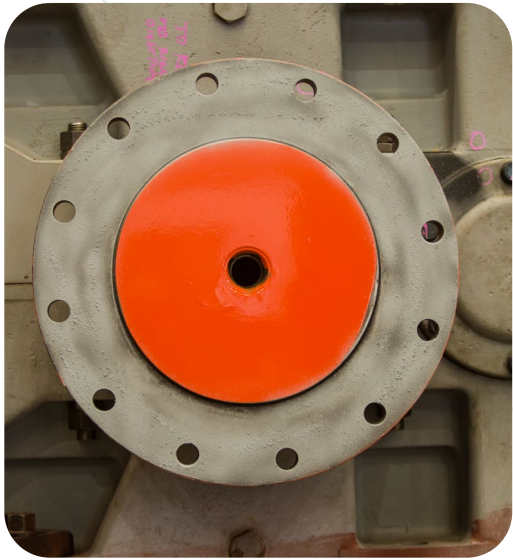
SKN 45
04-SKN45/4



SKN 20
04-SKN20/4



SKN 45
04-SKN45/AER380



CASE STUDY

CHALLENGE

The client wanted to determine the best preservation method for its components – to reduce corrosion during storage and transport.

Originally employing Reactive Copper Technology, the company compared this option with Daywalk's Volatile Corrosion Inhibitor (eVCI) solution, to see whether the eVCI technology represented an **effective alternative** to protect its components.

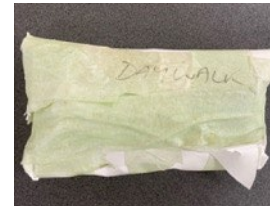


TEST

The company tested the preservation methods on two C175 engine lifting pins.



COPPER FILM



UV-VCI FILM



RESULT

After six weeks, the company unwrapped and compared the components.

COPPER FILM



**VISIBLE
CORROSION**

UV-VCI FILM



**NO
CORROSION**

AUSTRALIA OWNED & OPERATED





**WHERE DO WE
GO FROM HERE?**

*LET'S DISCUSS OUR
NEXT STEPS.*

