

CERTIFIED FOR STORAGE AND TRANSPORT

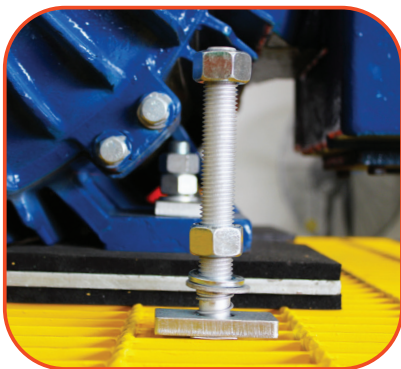
FORGED HOLD DOWN BOLT
If your bolt fails, everything is compromised.

Forged for unmatched strength and durability, these premium bolts are rigorously tested and certified to withstand the most demanding transportation conditions, ensuring the safety of your drivers, products, and the roads they travel.

Daywalk is the only product in the market with a fully certified, end-to-end transport pallet & top mounted bolting system. Top mounting prevents the need for personnel putting hands near suspended loads or through the inside of pallets during installation.



FEATURES / KEY BENEFITS



GALVANISED/FORGED CONSTRUCTION

Galvanised bolts offer superior corrosion resistance and longevity, making them ideal for many applications.



EASY TOP MOUNT SYSTEM

The bolt's two-step push and twist top-mount design eliminates the need to hold bolts under the pallet while installing for ease of handling.



TRANSPORT CERTIFIED

The Forged Hold Down Bolt is certified for use with our rated steel pallet system ensuring the safe transport of heavy components.

SPECIFICATIONS

SKU	13-BDK290 Hold Down Bolt Kit	13-BDK190 Hold Down Bolt Kit
Coating/Material	Mechanical Galvanised	Mechanical Galvanised
Thread & Length	M20 x 290mm	M20 x 190mm
Locking Mechanism	T-Bar w/holding pins for locking to grid mesh	T-Bar with holding pins for locking to grid mesh
Pack Inclusions	2 x Nuts, & Spring mesh attachment	2 x Nuts, & Spring mesh attachment
Certified Innovation Patent No.	No. 2020101895	No. 2020101895

DESIGN > LOGISTICS

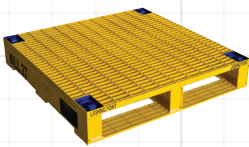
USER TIPS:

- Spring loaded system removes need for hand access under pallet deck
- Locking down components to Rated Steel Pallets
- Load restraint engineered for transport. Refer to Daywalk Steel Pallet Guide
- Compatible with DAYWALK Steel Pallet System
- Easy two step push & twist placement.



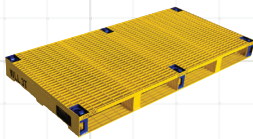
COMPATIBLE WITH

2T



13-PSGG1160
1160mmL x 1160mmW

3T



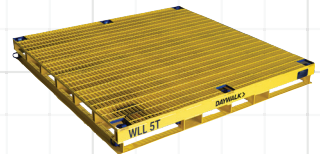
13-PSGG2320
2320mmL x 1160mmW

3.5T



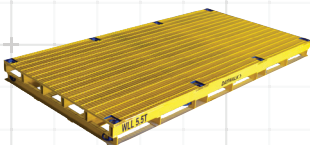
13-PMGG2320/1500
2320mmL x 1500mmW

5T



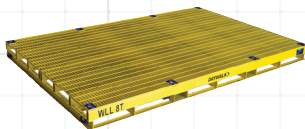
13-PMGG2320/2320
2320mmL x 2320mmW

5.5T



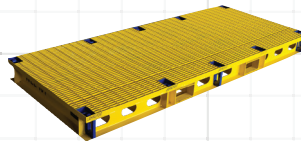
13-PMGG3500/1800
3500mmL x 1800mmW

8T



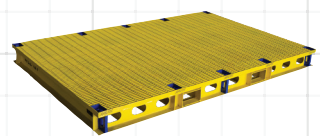
13-PMGG3500/2320
3500mmL x 2320mmW

10T



13-PSGG3500/1500/10T
3500mmL x 1500mmW

10T



13-PSGG3500/2320/12T
3500mmL x 2320mmW