

CERTIFIED FOR STORAGE AND TRANSPORT



**3.5T MEDIUM DUTY
STEEL PALLET**

2320mmL x 1500mmW x 255mmH

The Daywalk Steel Pallet range is designed to take the pain out of heavy equipment transport. Being a pre-engineered solution, which is certified for transport, the Steel Pallet range gives you peace of mind that your transport will meet Chain of Responsibility (CoR) compliance requirements.



FEATURES / KEY BENEFITS



HOT-DIP GALVANISED

Assured durability and corrosion protection, even in the most rugged racking environments due to weather exposure.



LASHING POINTS

Includes 6 top and 8 base lashing points and rated grid mesh for securing a multitude of different sized components.



LARGE FORK POCKETS

Optimal forklift compatibility with large fork tine pockets, suiting all sizes of forklift blades from tip to heel, including large onsite forklifts.

SPECIFICATIONS

| | |
|---------------------------------|---|
| SKU | 13-PMGG2320-1500 |
| Coating/Material | Hot-dip galvanised and powdercoated safety yellow |
| Ext. Dimensions | 2320mmL x 1500mmW x 255mmH |
| WLL | 3.5T |
| Compatibility | Forklift DAYWALK Steel Pallet Accessories DAYWALK Pallet Guide |
| Complies with | AS/NZS 1170.0 – 2002, AS/NZS 1170.1 – 2002, AS 4100 – 1998 & AS 4991 – 2004 |
| Certified Innovation Patent No. | 2020101895 |

DESIGN > LOGISTICS



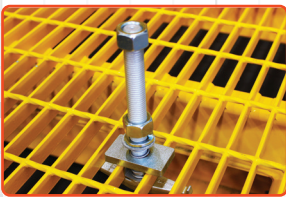
PRODUCT HIGHLIGHTS:

- Can be used in rugged environments
- Logistics certified and engineered to ensure CoR compliance
- Compatible with large range of bolting and chocking accessories

STEEL PALLET ACCESSORIES

Not limited to these options, please contact Daywalk

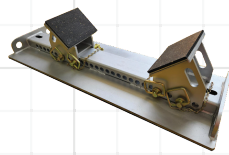
HOLD DOWN BOLTS



**13-BDK190
13-BDK290**

190mmL **OR** 290mmL

ADJUSTABLE CHOCKS



**13-HS500/BRC/ND/KIT
13-HS1000/BRC/ND/KIT**

500mmW **OR** 1000mmW

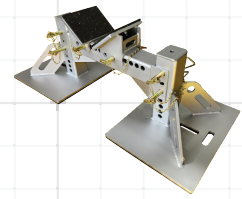
ADJUSTABLE STANDS



**13-VSA600/500/ND/KIT
13-VSA600/1000/ND/KIT**

500mmL **OR** 1000mmL

ADJUSTABLE STANDS



**13-VSA300/500/ND/KIT
13-VSA300/1000/ND/KIT**

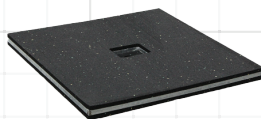
500mmL **OR** 1000mmL

ANTI-SLIP MATS



23-MRD/8R
Other options available
1250mmW x 25m
(FULL ROLL)

SPREADER PLATES



**13-SP250/250
13-SP400/400**
250mmL x 250mmW
400mmL x 400mmW

SPREADER PLATE



13-SP500/350
500mmL x 350mmW

SPREADER PLATE



13-SP400/150
400mmL x 150mmW