

CERTIFIED FOR STORAGE AND TRANSPORT



**5T MEDIUM DUTY  
STEEL PALLET**

**2320mmL x 2320mmW x 285mmH**

The Daywalk Steel Pallet range is designed to take the pain out of heavy equipment transport. Being a pre-engineered solution, which is certified for transport, the Steel Pallet range gives you peace of mind that your transport will meet Chain of Responsibility (CoR) compliance requirements.



FEATURES / KEY BENEFITS



**HOT-DIP GALVANISED**

Assured durability and corrosion protection, even in the most rugged racking environments due to weather exposure.



**LASHING POINTS**

Includes 6 top and 8 base lashing points and rated grid mesh for securing a multitude of different sized components.



**LARGE FORK POCKETS**

Optimal forklift compatibility with large fork tine pockets, suiting all sizes of forklift blades from tip to heel, including large onsite forklifts.

SPECIFICATIONS

SKU	13-PMGG2320-2320
Coating/Material	Hot-dip galvanised and powdercoated safety yellow
Ext. Dimensions	2320mmL x 2320mmW x 285mmH
WLL	5T
Compatibility	Forklift DAYWALK Steel Pallet Accessories DAYWALK Pallet Guide
Complies with	AS/NZS 1170.0 – 2002, AS/NZS 1170.1 – 2002, AS 4100 – 1998 & AS 4991 – 2004
Certified Innovation Patent No.	2020101895

DESIGN > LOGISTICS

**STEEL PALLETS  
RANGE**



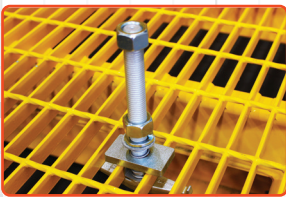
**PRODUCT HIGHLIGHTS:**

- Can be used in rugged environments
- Logistics certified and engineered to ensure CoR compliance
- Compatible with large range of bolting and chocking accessories

**STEEL PALLET ACCESSORIES**

Not limited to these options, please contact Daywalk

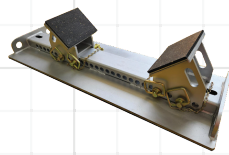
**HOLD DOWN BOLTS**



**13-BDK190  
13-BDK290**

190mmL **OR** 290mmL

**ADJUSTABLE CHOCKS**



**13-HS500/BRC/ND/KIT  
13-HS1000/BRC/ND/KIT**

500mmW **OR** 1000mmW

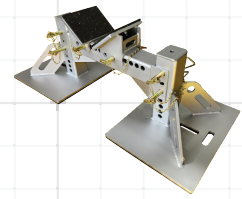
**ADJUSTABLE STANDS**



**13-VSA600/500/ND/KIT  
13-VSA600/1000/ND/KIT**

500mmL **OR** 1000mmL

**ADJUSTABLE STANDS**



**13-VSA300/500/ND/KIT  
13-VSA300/1000/ND/KIT**

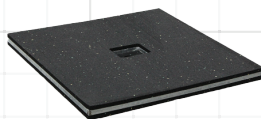
500mmL **OR** 1000mmL

**ANTI-SLIP MATS**



**23-MRD/8R**  
Other options available  
1250mmW x 25m  
(FULL ROLL)

**SPREADER PLATES**



**13-SP250/250  
13-SP400/400**  
250mmL x 250mmW  
400mmL x 400mmW

**SPREADER PLATE**



**13-SP500/350**  
500mmL x 350mmW

**SPREADER PLATE**



**13-SP400/150**  
400mmL x 150mmW

DESIGN > LOGISTICS