

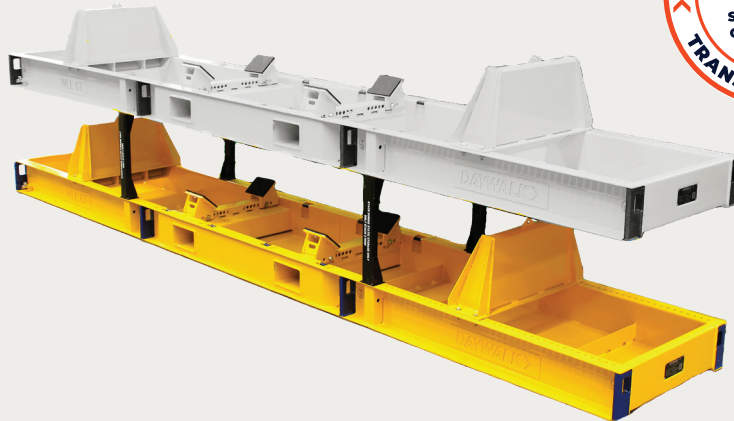
CERTIFIED FOR STORAGE AND TRANSPORT

6T ADJUSTABLE CYLINDER FRAME

Now stackable

(storage only).

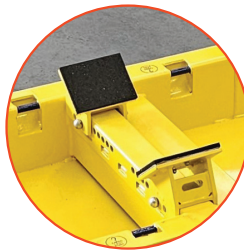
The DAYWALK 6T Adjustable Cylinder Pallet is a pre-engineered, CoR-compliant transport frame for multiple cylinders. It offers adjustable protection, handling, and optional rust prevention.



FEATURES / KEY BENEFITS



FORKLIFTABLE



HIGH-FRICTION RUBBER



INTERNAL LASHING LUGS



EXTERNAL 'TRUCK LASHING' LUGS



DRIP TRAY W/DRAINAGE



QR GUIDANCE & SUPPORT

COMPATIBLE WITH

Not limited to these options, please contact Daywalk



CYLINDERS



MILL PINIONS



STACKING STANCHIONS

CYLINDER FRAME RANGE



SPECIFICATIONS

	400KG	800KG	2,500KG	3,000KG	6,000KG
					
Product Name	Small Spartan Cylinder Frame	Medium Spartan Cylinder Frame	2.5T Cylinder Frame	3T Cylinder Frame	6T Cylinder Frame
Size	1200 x 550mm	2100 x 550mm	3100 x 680mm	2700 x 700mm	5800 x 950mm
Forklift Compatible	✓	✓	✓	✓	✓
Stackable	—	—	✓	✓	✓
Internal Lugs	✓	✓	✓	✓	✓
External Lugs	—	—	✓	✓	✓
Truck Restraint	—	—	✓	✓	✓
Drip Tray	✓	✓	✓	✓	✓
Certification & Identification Plaques	✓	✓	✓	✓	✓

DESIGN > LOGISTICS