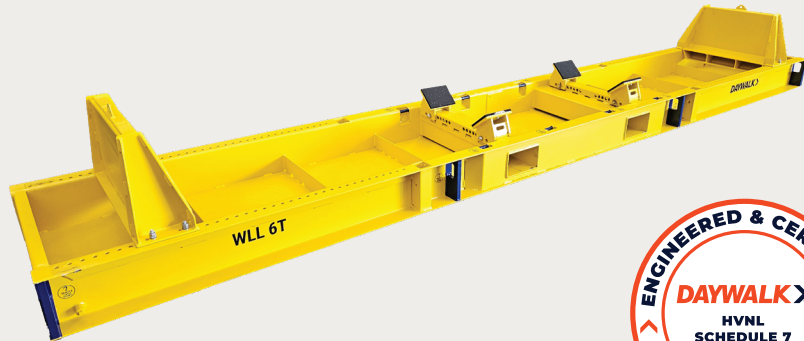


CERTIFIED FOR STORAGE AND TRANSPORT

6T ADJUSTABLE CYLINDER FRAME

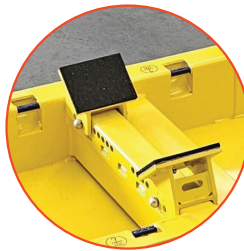
The DAYWALK 6T Adjustable Cylinder Pallet is a pre-engineered, CoR-compliant transport frame for multiple cylinders. It offers adjustable protection, handling, and optional rust prevention.



FEATURES / KEY BENEFITS



FORKLIFTABLE



HIGH-FRICTION RUBBER



INTERNAL LASHING LUGS



EXTERNAL 'TRUCK LASHING' LUGS



DRIP TRAY W/DRAINAGE



QR GUIDANCE & SUPPORT

COMPATIBLE WITH Not limited to these options, please contact Daywalk



CYLINDERS

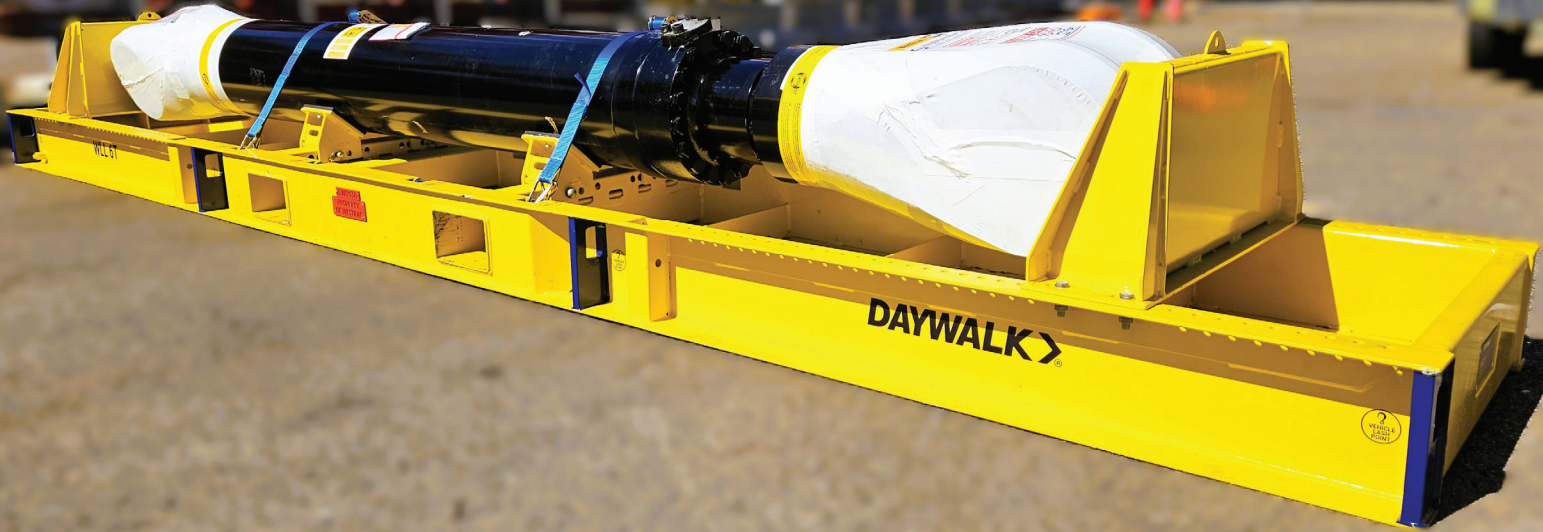


MILL PINIONS



LARGE SHAFTS

**6T ADJUSTABLE
CYLINDER FRAME**



SPECIFICATIONS

	400KG	800KG	3,000KG	6,000KG
Product Name	Small Spartan Cylinder Frame	Medium Spartan Cylinder Frame	3T Cylinder Frame	6T Cylinder Frame
Size	1200 x 550mm	1200 x 550mm	2700 x 700mm	5800 x 950mm
Forklift Compatible	✓	✓	✓	✓
Stackable	—	—	✓	—
Internal Lugs	✓	✓	✓	✓
External Lugs	—	—	✓	✓
Truck Restraint	—	—	✓	✓
Drip Tray	✓	✓	✓	✓
Certification & Identification Plaques	✓	✓	✓	✓

DESIGN > LOGISTICS