

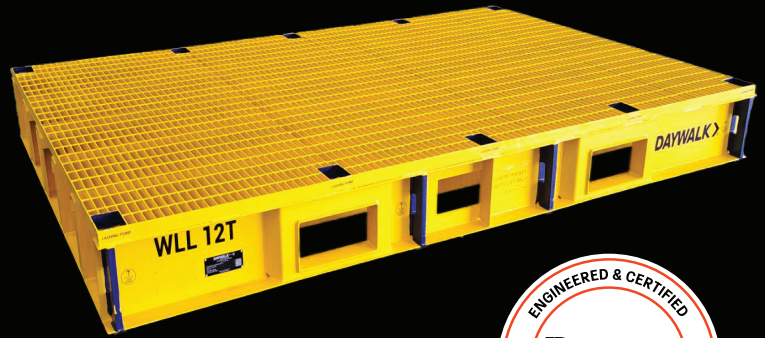
CERTIFIED FOR STORAGE AND TRANSPORT

12T ADAPTA HEAVY DUTY STEEL PALLET

3500mmL x 2320mmW x 250mmH

More than a steel pallet, this extra-large 3500 x 2320mm solution is part of the DAYWALK Adapta system, offering unmatched efficiency and flexibility.

The range offers a range of sizes including 2 tonne pallets, 5 tonne pallets and 8 tonne pallets.



FEATURES / KEY BENEFITS



HOT-DIP GALVANISED

Assured durability and corrosion protection, even in the most rugged racking environments due to weather exposure.



TRANSPORT CERTIFIED

Engineered and certified for transport, and includes 8 truck lashing points for securing a multitude of different-sized components on the road.



LARGE FORK POCKETS

Optimal forklift compatibility with large fork tine pockets, suiting all sizes of forklift blades from tip to heel, including large onsite forklifts.

SPECIFICATIONS

SKU	13-PSGG3500/2320/12T
Coating/Material	Hot-dip Galvanised and Powdercoated safety yellow
Ext. Dimensions	3500mmL x 2320mmW x 250mmH
WLL	12T UDL
Compatibility	Forklift, DAYWALK Steel Pallet Accessories, DAYWALK Pallet Guide
Complies with	AS/NZS 1170.0 – 2002, AS/NZS 1170.1 – 2002, AS 4100 – 1998 & AS 4991 – 2004
Certified Innovation Patent No.	2020101895

Keep Moving

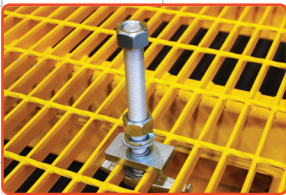


PRODUCT HIGHLIGHTS:

- Can be used in rugged environments
- Logistics certified and engineered to ensure CoR compliance
- Compatible with large range of bolting and chocking accessories

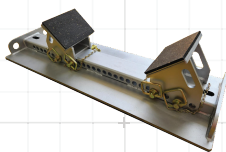
STEEL PALLET ACCESSORIES

HOLD DOWN BOLTS



**13-BDK190
13-BDK290**
190mmL OR 290mmL

ADJUSTABLE CHOCKS



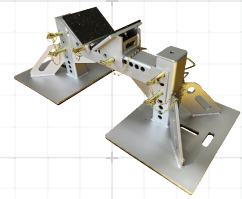
**13-HS500/BRC/ND/KIT
13-HS1000/BRC/ND/KIT**
500mmW OR 1000mmW

ADJUSTABLE STANDS



**13-VSA600/500/ND/KIT
13-VSA600/1000/ND/KIT**
500mmL OR 1000mmL

ADJUSTABLE STANDS



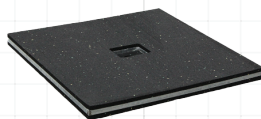
**13-VSA300/500/ND/KIT
13-VSA300/1000/ND/KIT**
500mmL OR 1000mmL

ANTI-SLIP MATS



23-MRD/8R
Other options available
1250mmW x 25m
(FULL ROLL)

SPREADER PLATE



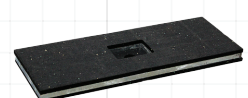
**13-SP250/250
13-SP400/400**
250mmL x 250mmW
400mmL x 400mmW

SPREADER PLATE



13-SP500/350
500mmL x 350mmW

SPREADER PLATE



13-SP400/150
400mmL x 150mmW

Keep Moving